

News from



HONEY LANE CARE HOME

Dear friends,

With a fresh new season upon us, our home is bursting with brightness and vibrancy! Take a glimpse into our delightful spring escapades in our latest newsletter.



Namaste

Have you heard about our Namaste Room? It's thought to be the first in Essex to offer Namaste Care, which is a holistic, person-centred approach to supporting people in the later stages of dementia. With advice from St Clare Hospice we have created a multi-sensory room where our residents engage with a range of meaningful sensory activities, such as massage, listening to music, and looking through a personalised memory box. Members of our team volunteered to be trained in Namaste Care and now run daily sessions.

This little piggy...



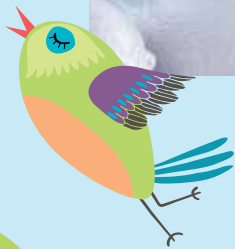
Back in April, we had the most wonderful visit from two little piglets. The special visit was organised through Performing Pets who introduced us to the joyful squeaks of Polly and Pocket, two four-week-old piglets. Both residents and team members absolutely loved having cuddles with these two cuties. Oink oink!



A Very Hoppy Easter



On Good Friday, we kicked off our Easter celebrations with a Honey Lane party. Residents were entertained by singer Clayton, who is always bursting with lots of fun and good vibes. There was lots of singing along and dancing, and we even had a visit from the Easter Bunny, who shook her tail to the music too! We indulged in all things chocolate and had fun making Easter nests – which were delicious.



Sea air and scenery

‘Oh, we do love to be beside the...quayside!’ In March a few of our residents braved the chilly weather to enjoy a drive to Promenade Park in Maldon. The sun was shining, and the residents loved taking in the beautiful scenery. We sat along the quayside, absorbing some rays of sun while watching the world go by. Under the warmth of a cosy blanket of course!



With love,
Angie Sacks
Home Manager

Honey Lane Care Home, Honey Lane, Waltham Abbey, Essex EN9 3BA Tel: 01992 940 430

**We always love reading your comments on Facebook!
Here are a few recent ones:**

“The Honey Lane Care Home team are fantastic. Thank you for working with our fabulous Jo to improve the lives of people living with advanced dementia.” St Clare Hospice

“How beautiful Honey Lane you always go that extra mile.” Bonny

“Thank you for all that you do.” Teresa



If you don't wish to receive future newsletter updates from us, please email us at marketing@carebase.org.uk and we'll of course, remove you from our list.